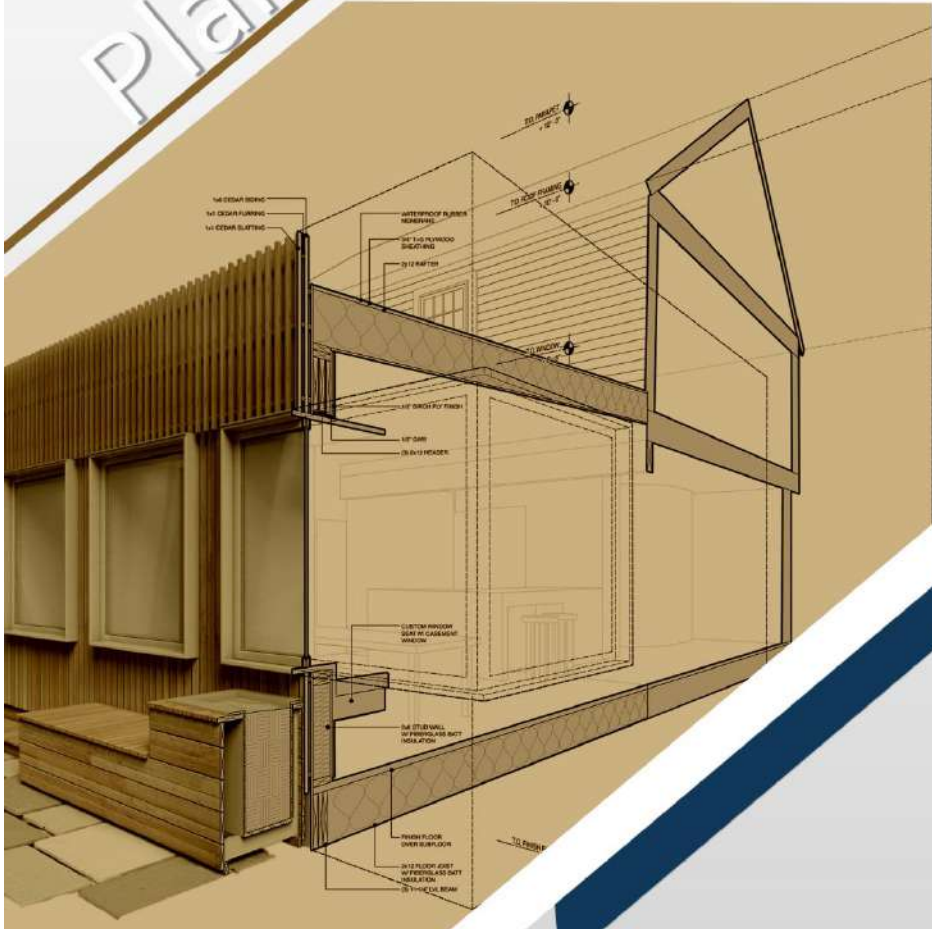




PlanTracer



# PlanTracer

PlanTracer is a comprehensive FM software solution for AutoCAD. It gives you a power of BIM and enables you to quickly and easily convert raster floor and building-plan drawings into parametric models consisting of intelligent objects. These objects contain all necessary facility information and are connected with each other. For example, a window - it may contain information about the materials, for a room it may be data on room connection to other rooms. There is no more problem with old paper floor plans. PlanTracer recognizes and converts them into intelligent models in less than no time.



AutoCAD 2017-2018 compatible

Supports AutoCAD x86 & x64

Floor plans are parametric models consisting of intelligent object

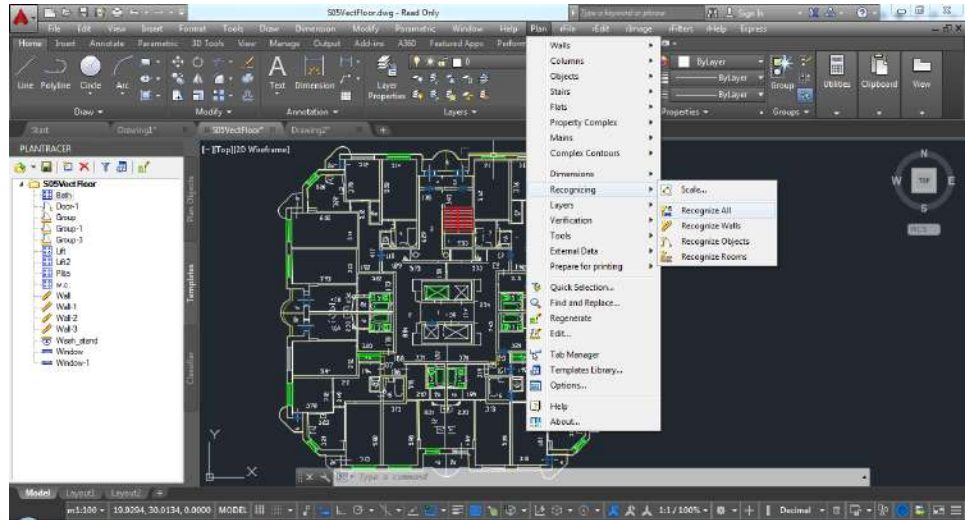
Graphical front-end for any Facilities Management solution

Improved work flow of floor plan data extraction

Open API to internal data structures of the floor plan models

Preparation of plan for printing

Creation of tables  
Property Complex



PlanTracer is designed to satisfy the requirements of the most demanding organizations in analysis and access to information about maintenance and facilities of the real estate. It can integrate with facility management applications, databases, and Excel, helping to keep all required facility data up-to-date.



## Who needs Plan Tracer?

PlanTracer is ideally suited to professionals in facility management and real estate; it meets their particular needs and offers competitive advantages. It can be used in areas where facility management solutions are required. Whatever you manage, commercial or institutional buildings, PlanTracer meets all your goals. As PlanTracer is based on AutoCAD, AutoCAD-trained professionals can start using PlanTracer with minimal training. PlanTracer provides a wide range of easy-to-use tools and technologies to save you valuable time and reduce costs to the company.



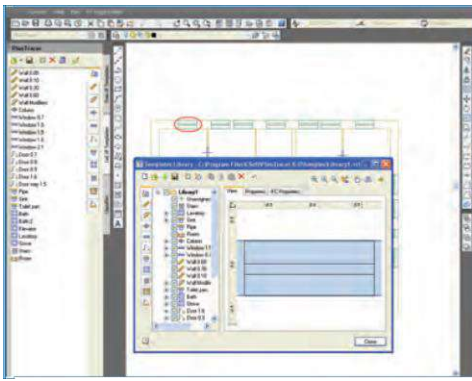
## Plan Tracer features

- AutoCAD 2017-2018 compatible including x86 & x64 version
- Creation of plans models directly from both 2D-CAD drawings and raster images
- Advanced set of tools to draw new, redraw and modify existing floor plans
- Template Library, consisted of intelligent objects (Walls, Doors, Windows, Stairs, Columns and etc.), which can be added by user
- Adjustable to maintain facility management standards
- API for access to internal data structures of plan models
- Export/Import to IFC

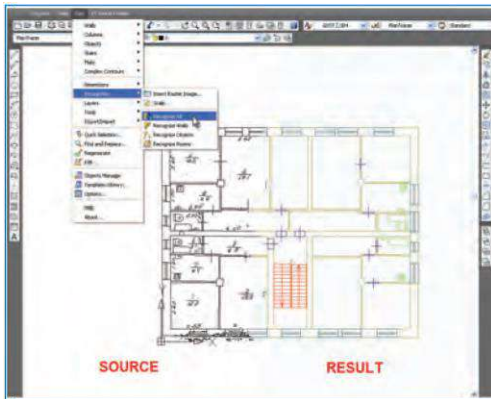


## Must have' for Facilities Management

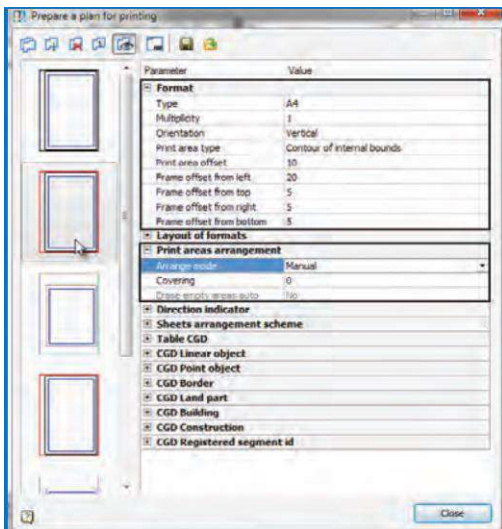
The integration of existing drawing archives with computer-aided facilities Management systems requires an efficient technology to convert and capture FM-related data from the original building plans. The need to keep FM data up-to-date through a simple process has motivated the PlanTracer development.



Template Library



From scanner to beam



Prepare a plan for printing

## PlanTracer includes major changes

PlanTracer includes new or changed features,

Some of these features are:

- PlanTracer 2018 supports AutoCAD 2017-2018 (x86 & x64 System).
- Preparation of plan for printing - Manual or automatic placement of print areas in model space.
- Creation of tables - includes basic tools with page division using variables snap to cell which can be used to import and export from excel for cell properties.
- Property Complex.

PlanTracer focuses one efficiency and user. PlanTracer delivers advanced tools for floor plan drawing and editing. Its unique tool set also includes automatic and semi-automatic conversion of data such as 2D or raster floor and building-plan drawings into intelligent models PlanTracer will recognize a floor plan, extract FM data and create "Intelligent Objects" from source drawings. These objects will contain all the necessary data for your FM solution. PlanTracer provides an open programming interface for easy integration with Facilities Management applications, databases and MS Office. A Facilities Management solution can access all objects on the floor plan models. Remember that old buildings not yet part of BIM or FM solutions still = out number BIM'ed properties by more than 10:1. PlanTracer is designed to help you fast-track your BIM and FM needs.

## Creating floor plans becomes easier

Since PlanTracer was developed, the process of floor plan creation has become creative and enjoyable. There is a choice from three modes of floor plan creation:

- **Parametric mode** - Automatic and semi-automatic conversion of original floor plans made by measuring rooms and converting them to a parametric model. PlanTracer has an opportunity to finely recognize and convert raster (bi-tonal) images (there are a large number of raster enhancement tools to get better result of conversion) and 2D non-parametric drawings (made in AutoCAD or from other CAD software. PlanTracer also converts results of raster-to-vector conversion).
- **Library mode** - Traditional floor plan drawing using parametric library objects. PlanTracer has a user-expandable library of intelligent objects (building elements), you can create new objects from AutoCAD blocks or sets of entities.
- **Contour mode** - Floor plan creation from measured outer and inner contours of the building. Choose the most appropriate mode in the process of floor plan creation.